

# ***YONG YANG STEEL***

*Connecting the world with rails*

 [www.yyrail.com](http://www.yyrail.com)



**HANDAN YONGYANG IMP.&EXP. CO.,LTD**



## COMPANY INTRODUCTION



Handan Yongyang Imp.&exp.co.,Ltd, established in 2007, is the wholly-owned subsidiary of Hebei Yongyang Special-steel Group Co.,Ltd, our products mainly include: 8Kg-30Kg light steel rail, 38Kg-75Kg heavy steel rail, QU70-QU120 Crane rail, 9-12# I-Beam for Mining, 25-36(U)Mining Arch Support steel, rail fasteners and all sizes of round bar, flat bars.

Our factory, built in 1993, is located at yongnian Special steel industrial zone, covering an area of 951000 Square meters, with 4200 employees, the general asset is 600 millions US Dollars.

As the biggest steel rail manufacturer and supplier in china, the annual production capacity of our factory is 2200000 tons section steel. The main products are light steel rail, heavy steel rail, crane steel rails, I-Beam for mining, U-shaped arch steel and high-strength hot-rolled flat steel for automobile, rail fasteners.etc. At present, the company has built two 1260m<sup>3</sup> blast furnace, two 180 m<sup>2</sup> sintering machine, and limestone kiln and power generating system; two 120t converter, one 120t LF affinage furnace, one 120 ton VD Furnace, one eight machines eight continuous casters and ancillary oxygen generation system; one Φ850 fully continuous rolling section steel production line, one Φ850 rolling mill production line, and one Φ750 rolling mill production line.

Our products are widely used in railroad, seaport, mining industry and tunneling industry.etc. Light steel rail, heavy steel rail and mining support steel were awarded as well-known product by Hebei Provincial Administration of Quality and Technical Supervision, and the company is the designated production enterprises of mining support product for China coal industry companies, which occupy 70% of domestic market.

To ensure the product quality, our factory has imported many advanced testing and inspection instrument and established advanced physics and Chemical Analysis Lab. The company wins the title of China's Top 500 manufacturing enterprises, and passed ISO9001:2008 quality management system certification in 2013.

After over two decades development, Yongyang Company grows into the largest steel rail and mining support steel manufacturer of China. Our products are sold well at home and abroad including Southeast Asia, South American, Middle East, Africa, Europe and Russia.etc.

Handan Yongyang Imp.&exp.co.,Ltd will always adhere to our enterprises philosophy: Credit-based, Quality first, Mutual benefit and Win-win cooperation and provide our best service and high quality product to all our customers at home and aboard with competitive price.





# QUALITY CERTIFICATE



To ensure the quality of the product and produce satisfactory product, our group established physical and chemical testing laboratory in 2007, and the laboratory had been certified by CNAS (China National Accreditation Service Conformity for Assessment) in 2014, which had been recognized by more than 50 countries and 60 organizations in the world.









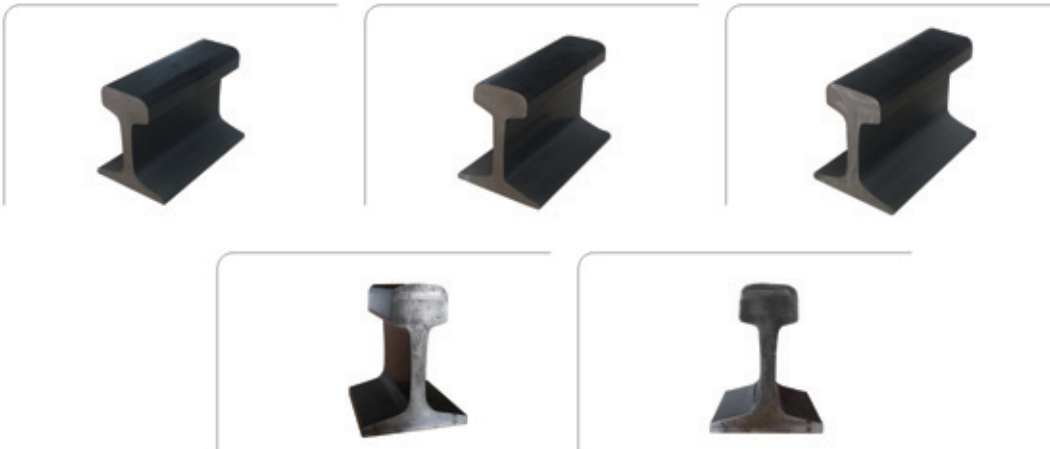
# LIGHT RAIL



| Name       | Type   | Sectional dimension (mm) |              |            |               | Theoretical Weight (kg/m) |
|------------|--------|--------------------------|--------------|------------|---------------|---------------------------|
|            |        | Rail Height              | Bottom Width | Head Width | Web Thickness |                           |
| Light Rail | 8kg/m  | 65.00                    | 54.00        | 25.00      | 7.00          | 8.42                      |
|            | 12kg/m | 69.85                    | 69.85        | 38.10      | 7.54          | 12.2                      |
|            | 15kg/m | 79.37                    | 79.37        | 42.86      | 8.33          | 15.2                      |
|            | 18kg/m | 90.00                    | 80.00        | 40.00      | 10.00         | 18.06                     |
|            | 22kg/m | 93.66                    | 93.66        | 50.80      | 10.72         | 22.3                      |
|            | 24kg/m | 107.00                   | 92.00        | 51.00      | 10.90         | 24.46                     |
|            | 30kg/m | 107.95                   | 107.95       | 60.33      | 12.30         | 30.1                      |



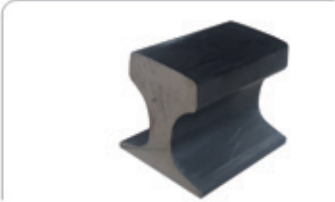
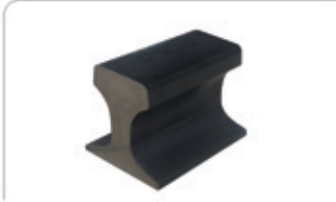
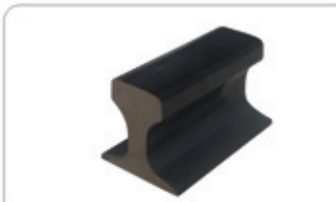
# HEAVY RAIL



| Name       | Type   | Sectional dimension (mm) |              |            |               | Theoretical Weight (kg/m) |
|------------|--------|--------------------------|--------------|------------|---------------|---------------------------|
|            |        | Rail Height              | Bottom Width | Head Width | Web Thickness |                           |
| Heavy Rail | 38kg/m | 134.00                   | 114.00       | 68.00      | 13.00         | 38.733                    |
|            | 43kg/m | 140.00                   | 114.00       | 70.00      | 14.50         | 44.653                    |
|            | 50kg/m | 152.00                   | 132.00       | 70.00      | 15.50         | 51.514                    |
|            | 60kg/m | 176.00                   | 150.00       | 73.00      | 16.50         | 60.80                     |
|            | 75kg/m | 192.00                   | 150.00       | 75.00      | 20.00         | 74.64                     |



CRANE RAIL

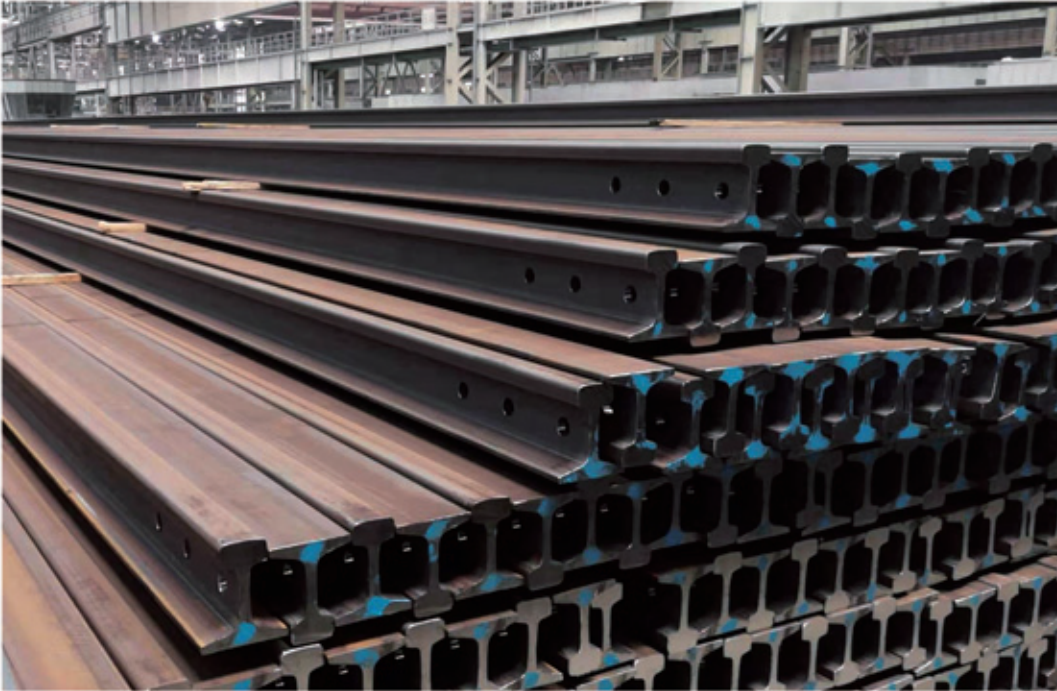


| Name       | Type  | Sectional dimension (mm) |              |            |               | Theoretical Weight (kg/m) |
|------------|-------|--------------------------|--------------|------------|---------------|---------------------------|
|            |       | Rail Height              | Bottom Width | Head Width | Web Thickness |                           |
| Crane Rail | QU70  | 120.00                   | 120.00       | 70(76.5)   | 28.00         | 52.80                     |
|            | QU80  | 130.00                   | 130.00       | 80(87)     | 32.00         | 63.69                     |
|            | QU100 | 150.00                   | 150.00       | 100(108)   | 38.00         | 88.96                     |
|            | QU120 | 170.00                   | 170.00       | 120(129)   | 44.00         | 118.10                    |





## UIC Standard Rail



| Standard  | Type | Sectional dimension (mm) |              |            |               | Theoretical Weight (kg/m) | material                  |
|-----------|------|--------------------------|--------------|------------|---------------|---------------------------|---------------------------|
|           |      | Rail Height              | Bottom Width | Head Width | Web Thickness |                           |                           |
| EN13674.1 | 54E1 | 159                      | 140          | 70         | 16            | 54.77                     | R260<br>R350HT<br>R350LHT |
|           | 60E1 | 172                      | 150          | 72         | 16.5          | 60.21                     |                           |
|           | 60E2 | 172                      | 150          | 72         | 16.5          | 60.03                     |                           |

| Standard | Type  | Sectional dimension (mm) |              |            |               | Theoretical Weight (kg/m) | material      |
|----------|-------|--------------------------|--------------|------------|---------------|---------------------------|---------------|
|          |       | Rail Height              | Bottom Width | Head Width | Web Thickness |                           |               |
| UIC860   | UIC54 | 159                      | 140          | 70         | 16            | 54.43                     | 900A/<br>1100 |
|          | UIC60 | 172                      | 150          | 72         | 16.5          | 60.21                     |               |





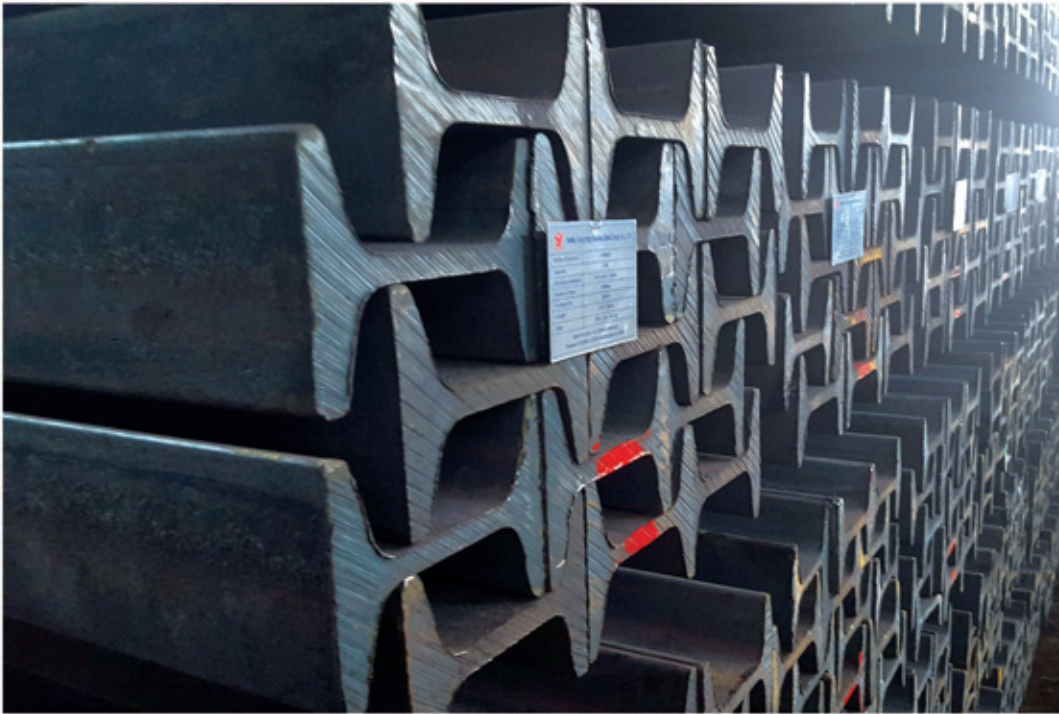
## DIN Standard Rail



| Standard | Type  | Sectional dimension (mm) |              |            |               | Theoretical Weight (kg/m) | material       |
|----------|-------|--------------------------|--------------|------------|---------------|---------------------------|----------------|
|          |       | Rail Height              | Bottom Width | Head Width | Web Thickness |                           |                |
| DIN536   | A45   | 55                       | 125          | 45         | 24            | 22.1                      | 900A           |
|          | A55   | 65                       | 150          | 55         | 31            | 31.8                      |                |
|          | A65   | 75                       | 175          | 65         | 38            | 43.1                      |                |
|          | A75   | 85                       | 200          | 75         | 45            | 56.2                      |                |
|          | A100  | 95                       | 200          | 100        | 60            | 74.3                      |                |
|          | A120  | 105                      | 220          | 120        | 72            | 100                       |                |
|          | A150  | 150                      | 220          | 150        | 80            | 150.3                     |                |
| Standard | Type  | Sectional dimension (mm) |              |            |               | Theoretical Weight (kg/m) | material       |
|          |       | Rail Height              | Bottom Width | Head Width | Web Thickness |                           |                |
| AREMA    | 115RE | 168.28                   | 139.7        | 69.06      | 15.88         | 56.9                      | SS HH<br>LA IH |
|          | 136RE | 185.74                   | 152.4        | 74.61      | 17.46         | 67.41                     |                |



# I-BEAM FOR MINING

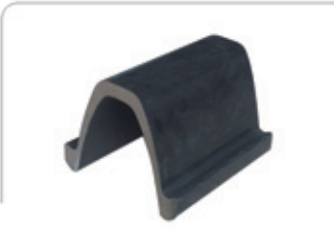
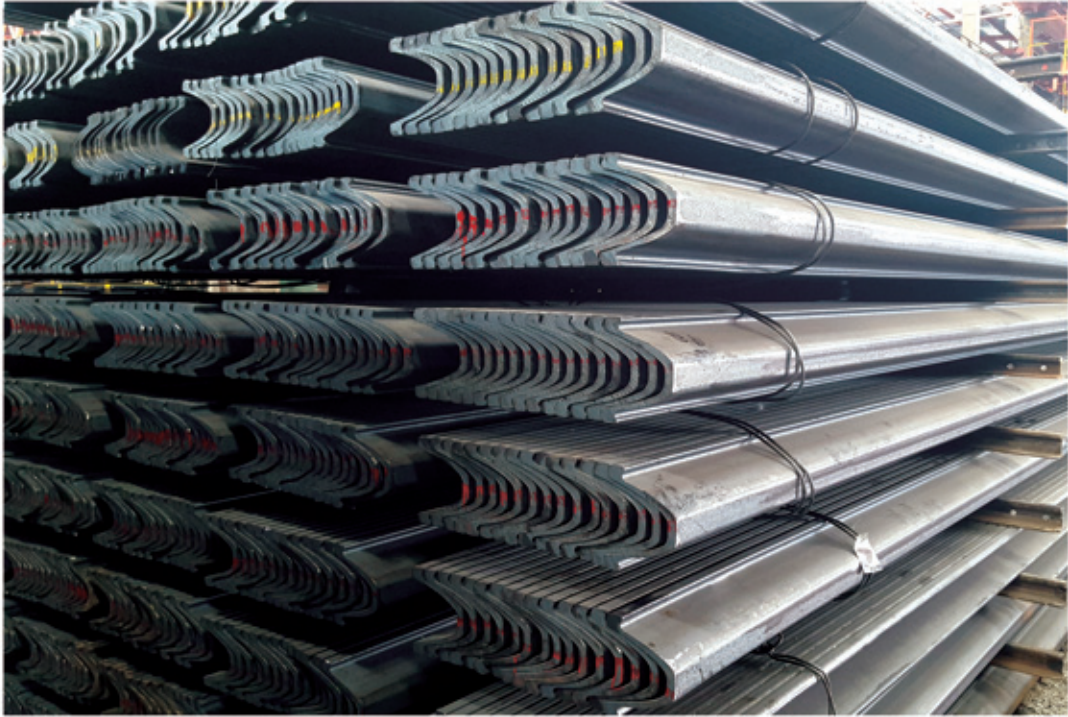


| Name              | Type | Sectional dimension (mm) |              |               | Theoretical Weight (kg/m) |
|-------------------|------|--------------------------|--------------|---------------|---------------------------|
|                   |      | Height                   | Bottom Width | Web Thickness |                           |
| I-Beam for Mining | 9#   | 90.0                     | 76.0         | 8.0           | 17.69                     |
|                   | 11#  | 110.0                    | 90.0         | 9.0           | 26.05                     |
|                   | 12#  | 120.0                    | 95.0         | 11.0          | 31.18                     |





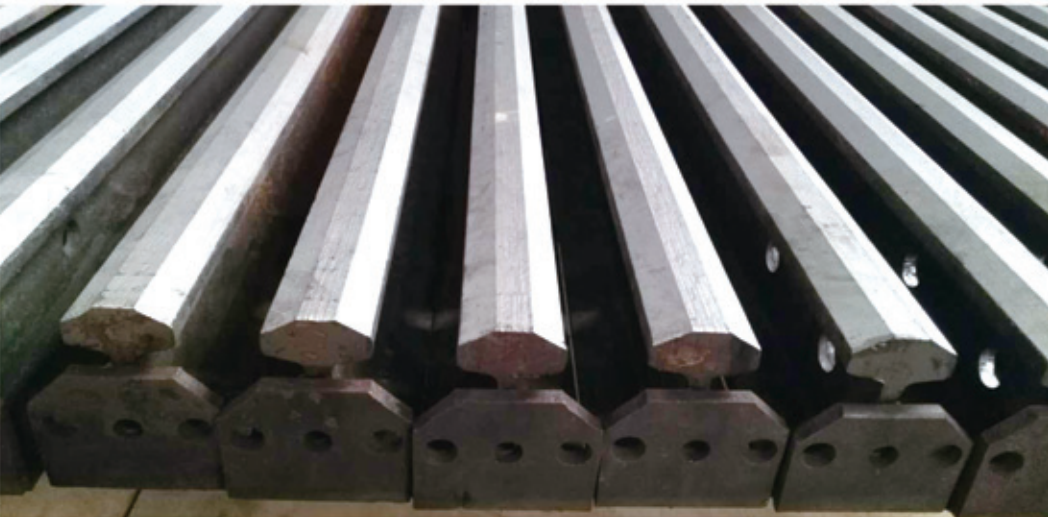
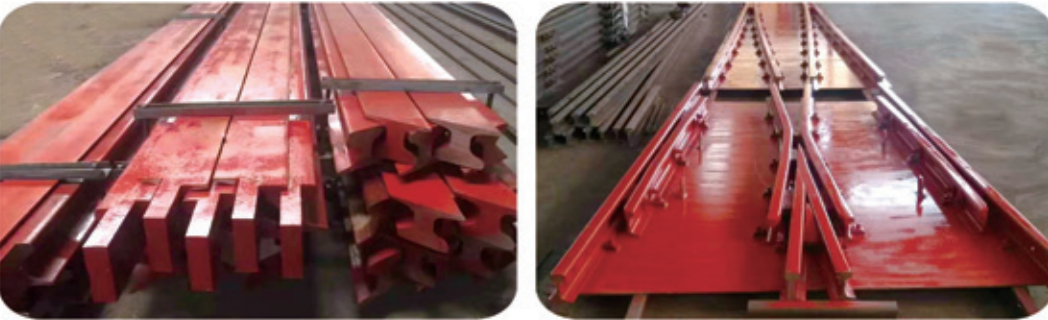
# U-SHAPED BEAM FOR MINING



| Name                     | Type | Height | Web Thickness | Outer Opening | Inner Opening | Leg Thickness | Theoretical Weight (kg/m) |
|--------------------------|------|--------|---------------|---------------|---------------|---------------|---------------------------|
| U-shaped Beam for Mining | 25U  | 110,0  | 17,0          | 134,0         | 92,0          | 6,6           | 24,76                     |
|                          | 29U  | 124,0  | 16,0          | 150,5         | 116,0         | 7,2           | 29,0                      |
|                          | 36U  | 138,0  | 17,0          | 171,0         | 128,0         | 7,8           | 35,87                     |



## RAIL MACHINING



To satisfy the different kinds requirements of our clients, our company procure many kinds of machining equipment, which can carry out secondary machining of the steel rail, such as cutting, drilling, painting, hole-making etc.





## HOT-ROLLED FLAT BAR



| Category                         | Description of Product              | Size (mm) | Material  | Length (m)   |
|----------------------------------|-------------------------------------|-----------|---|--------------|
| Flat bar for automobile industry | Flat bar for automobile leaf spring | 5-13*60   | 60Si2Mn<br>60CrMn<br>55CrMn<br>50CrV<br>60Si2Cr<br>55SiMnVB | 6            |
|                                  |                                     | 6-12*63   |   |              |
|                                  |                                     | 6-15*70   |   |              |
|                                  |                                     | 8-18*75   |   |              |
|                                  |                                     | 12-20*80  |   |              |
|                                  |                                     | 9-25*90   |   |              |
|                                  |                                     | 10-25*100 |   |              |
|                                  | 11-20*120                           |           |   |              |
| Flat bar for high-strength beam  | 14-20*150                           |           |   |              |
|                                  | 8-20*140                            | Q345B     | 13  |              |
| Flat bar for machinery equipment | Flat bar for forklift               | 35*100    | 33MnCrTiB<br>40Cr   | 6-12         |
|                                  |                                     | 40*100    |   |              |
|                                  |                                     | 50*100    |   |              |
|                                  |                                     | 45*125    |   |              |
|                                  | Flat bar for Rack                   | 50*125    |   |              |
|                                  |                                     | 43*63     | 60#   | 6.5          |
|                                  | Flat bar for agricultural machinery |           | 80*15   | 45#<br>S45Cr |
| 90*16                            |                                     |           |   |              |
| 95*17                            |                                     |           |   |              |
| 110*17                           |                                     |           |   |              |
|                                  | 130*19                              |           |   |              |



# ROUND BAR



| Category  | Description of Product   | Size (mm) | Material                            | Length(m) |
|-----------|--------------------------|-----------|-------------------------------------|-----------|
| Round bar | Quality Carbon Round bar | Φ12-28    | Q235<br>45#<br>Q345B<br>65Mn        | 6         |
|           |                          | Φ30-60    |                                     |           |
|           |                          | Φ65-90    |                                     |           |
|           |                          | Φ95-130   |                                     |           |
|           | Alloy Round bar          | Φ30-60    | 40Cr<br>42CrMo<br>GCr15<br>20CrMnTi | 6         |
|           |                          | Φ65-90    |                                     |           |
| Φ95-130   |                          |           |                                     |           |





## RAIL AND MINING FASTENERS



Our company can manufacture all kinds of mining and rail fasteners, including fish plate, fish bolt, dog spike, rail clamp, rail clip, rail turnout, rail gauge rod, mineral wheel, anchor rod, tie plate, elastic rail clip, wire mesh, trays.etc.

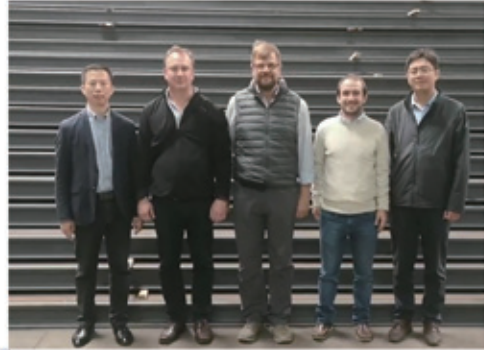




Yong Yang Steel



## FOREIGN CLIENTS







With the continuous development and growth of the company's business, the advantages in product quality, price and service are increasing obviously, which is well received and praised by the international market. Companies and distributors from the United States, Russia, India, Australia, Iran, Turkey, Vietnam and other countries came to visit our factory to discuss cooperation successively.



# PROJECT CASES

## Domestic Project

1、 In 2010-2012, 43Kg, 50Kg Heavy steel rail were applied at aqueduct lifting installation of South-to-North Water Diversion Project (Henan Section) undertaken by Sinohydro Engineering Corporation.



2、 In 2013-2016, 38Kg, 43Kg Heavy steel rail were applied at Shanxi yellow river diversion Project Tunneling undertaken by China Railway 18 Bureau Group Co.,Ltd.





3、 In 2014, QU100 Crane Rail were applied at Lianyungang (Tianwan) Nuclear Project undertaken by Jiangsu No.3 Electric Power Construction Co.,Ltd.



4、 In 2016, 43Kg were applied at Jiangsu Changzhou Subway Project undertaken by China Tiesiju Civil Engineering Group Co., Ltd



5、 In 2016-2018, QU70-QU120 Crane Rail were applied at Fujian Fuqing Nuclear Project undertaken by China Nuclear Power Engineering Co.,Ltd







## Overseas Project

1、 In 2012-2014, 43Kg heavy steel rail were applied at Ecuador Sinohydro Coca Codo-Sinclair Hydropower Station



2、 In 2015-2017, 43Kg heavy steel rail were applied at Israel Tel Aviv Metro project undertaken by China Railway Tunnel stock Co.,Ltd.





3、 In 2016-2018, 18Kg Light steel rail were applied at Kenya Nairobi water supply tunnel project undertaken by China Gezhouba Group Corporation.



□ Handan Yongyang Imp.&exp.co.,Ltd will closely rely on group's product, actively making pioneering efforts and courageously make innovations, and provide our quality product and best service to all our clients at home and aboard with competitive price as always. Let us work together by ways of sincere cooperation and mutual benefit to promote economic development and create a better future.



**HANDAN YONGYANG IMP.&EXP. CO.,LTD**

Landline : +86-310-6919 599

E-mail : [sales@yyrail.com](mailto:sales@yyrail.com)

Add: Duliugu, Handan City, Hebei Province, China